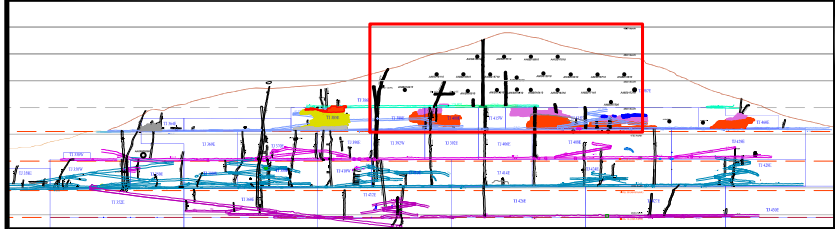


Raises	Avg Channel Sample Width (m)	Ag (g/t)	Au (g/t)	Pb %	Zn %	Cu %
CH 418N	1.35 (41 Channels)	1,890	5.37	1.06	2.06	0.10
CH 412N	1.55 (30 Channels)	406	1.26	1.71	3.38	0.08
CH 414N	1.42 (11 Channels, in-progress)	653	1.28	0.99	2.09	0.05

Drill Hole	From (m)	To (m)	Int (m)	Ag (g/t)	Au (g/t)	Pb %	Zn %	Cu %
ANIS007506	91.40	96.60	5.20	116	1.03	3.74	5.43	0.29

Cross-cuts/ Raise-Bore	True Width Animas Vein (m)	Ag (g/t)	Au (g/t)	Pb %	Zn %	Cu %
EST 418N	4.36	2,110	13.27	1.73	2.47	0.11
CHA 407N	10.0	1,453	6.12	0.62	0.66	0.09
EST 412N	6.85	179	0.46	0.94	1.94	0.06
EST 397N	7.35	261	0.31	1.19	1.13	0.08



**LEGEND:**


- Slope-2010
- Slope-2009
- Slope-2008
- Completed Drill Holes

Scale: 1/2000

0 25 50 (m)

DATUM: WGS 84 ZONA: 19 Sur

Date: 23 April 2010



**FORTUNA**  
SILVER MINES INC.

**Longitudinal Section (Looking NW)**

Animas Vein - Level 6  
Caylloma Mine, Arequipa, Peru